

ASPEN VALLEY LAND TRUST

ANNUAL REPORT

2022



First and foremost, we would like to thank the conservation easement donors that are the backbone of this work!

2022 BOARD

- David Chase, *President*
- Ellen Huntley Dubé, *Vice President*
- Charles Bantis, *Secretary*
- Cynthia Jacobson, *Treasurer*
- Stephen Bershenyi
- Kalli Gustafson Sinclair
- Curtis Kaufman
- Scott Miller
- Richard Shaw

2022 STAFF

- Suzanne Stephens, *Executive Director*
- Carly Bolliger, *Communication & Engagement Director*
- Jeff Davlyn, *Philanthropy Director*
- Dave Erickson, *Stewardship Director*
- Brian Hightower, *Education Coordinator & Ranch Manager*
- Erin Quinn, *Conservation Director*
- Jonathan Rose, *Restoration & Land Management Director*
- Melissa Sumera, *Operations Director*
- Bud Tymczyszyn, *Stewardship Director, Conservation Easement Specialist*



THIS ONE'S FOR THE LAND STEWARDS

As I reflect on my 20 years at Aspen Valley Land Trust (how exactly did that happen?), I am filled with gratitude and awe for what we have accomplished together. **Thanks to your generous support and partnership, we have protected over 46,000 acres of land in the Roaring Fork and Colorado River valleys, ensuring that our natural and agricultural heritage will endure for generations to come.**



You are the reason we can do this work. Whether you are a landowner who has entrusted us with a conservation easement, a donor who has contributed to our stewardship fund, a volunteer who has helped improve and restore land, a partner who has brought resources and expertise to a project, or a community member who has enjoyed the beauty and benefits of our conserved lands, you are part of this conservation family. And we could not do it without you.

As we look ahead to the next 20 years, we face new challenges and opportunities. The pressures of development, climate change, and population growth threaten to fragment and degrade our precious landscapes. But we also have the chance to leverage new tools and partnerships, to engage new audiences and supporters, and to expand our impact and reach. We have a vision of a resilient and connected landscape that supports wildlife, agriculture, outdoor recreation, and culture.

And we need your help to make it a reality.

Putting our first ever Strategic Conservation Plan into action is requiring increased resources, innovation, support, and energy – and your continued belief and partnership. **Now is the time to be brave and bold.** Nothing less will do.

Thank you for being part of this conservation family. Together, we can ensure that the land we love is protected forever. Our lives depend on it.

With thanks,
Suzanne Stephens
Suzanne Stephens, Executive Director

YOUR SUPPORT MAKES AN IMPACT

Since 1967, thanks to generous supporters like you, Aspen Valley Land Trust has protected and cared for:



46,000 acres



103 miles of river and stream front



30,000 acres of critical winter wildlife habitat



7 schools engaged in outdoor learning



45 properties providing public access

A HOMECOMING THAT CREATED A FOREVER HOME

"It was a no brainer."

Lulu Colby graduated as a Meeker High Cowboy, possibly unaware her school mascot was foretelling a future of working on the land.

Lulu spent years enjoying the beauty of the west while herding sheep in Northern Colorado, managing a ranch in southern Montana, and running weed-grazing goats all the way down to Arizona. When given the opportunity to select a destination for her next career relocation, she chose home: Rifle, Colorado.

"Rifle was nothing when I went away; there was nothing south of the freeway. Seeing what happened to the Western Slope since I've been away – everything changed so much – it made me want to do something."

Lulu wanted to buy her own slice of home and make sure it would be forever protected from the change creeping south of the interstate and across the region. In 2022, she donated a conservation easement to AVLT on her newly acquired property, Sweet Grass.

"It was a no brainer. I thought, there's an important piece of the puzzle."

Adjacent to other protected lands, Sweet Grass is home to uninterrupted sagebrush and gamble oak, rich riparian forests, woodlands, and wetlands. Ask about her choice to conserve the property and she will tell you, ***"if you've been up to my place you would understand."***

Now that Sweet Grass is protected in perpetuity, Lulu stays busy with various restoration projects, planting native species, improving irrigation ditches, and fighting "this damn smooth brome."

"I've always been working on the land, living on it. It's evolved, you gravitate and progress, and now seeing what's happened to so many pieces of land, you say, now I need to work to preserve it."

What began as, and is once again, Lulu's home will forever also be home to elk, mule deer, moose, black bears, songbirds, and raptors thanks to Lulu's dedication to this valley.

"I hope we can preserve what we have and do a lot of work to conserve our resources, our wildlife, and our watersheds."





MEMORIES TO CHERISH

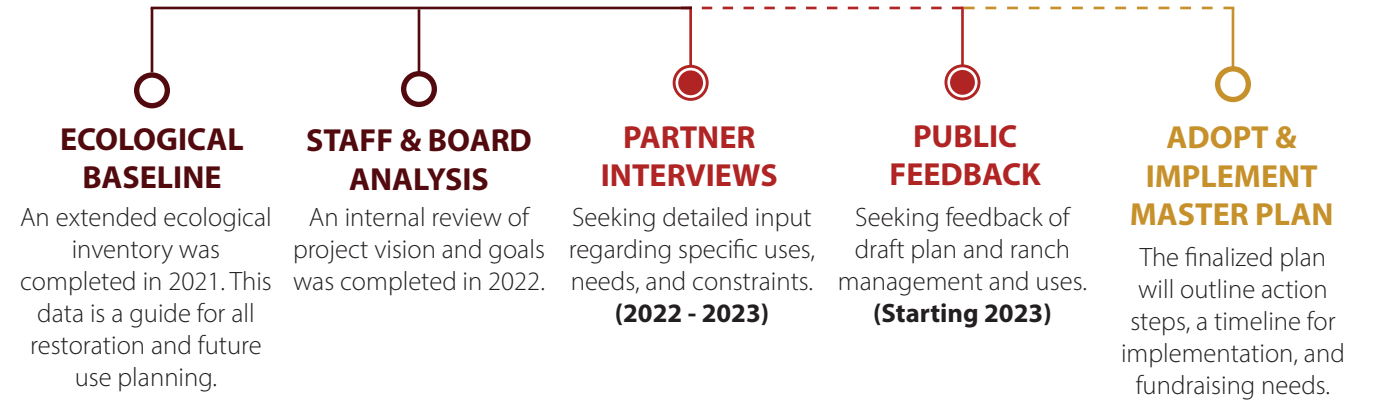
To AVLT 2022 will forever be known as "the early days of Coffman Ranch." Ironically so, as it has been actively ranched for more than a century. But to AVLT, owning and managing a ranch is new territory and a new adventure that will have lasting benefits for all of our work throughout the region.

It was a year of learning, listening, and growing love for this land. We have been blessed to have the guidance, wit, and wisdom of Rex and JoAnn Coffman as they continue to live in their home of 67 years and tolerate our occasional antics and blunders as we learn to call Coffman Ranch home. Their legacy and spirit is inseparable from the ranch and will forever be a part of its future, even as we slowly transition to new agricultural systems and practices with the help of our new ranch lessee. We are slowly introducing new opportunities for outdoor education and public access, and envision habitat restoration projects that recall the glory days of this riverside floodplain that once supported ponderosa pine thickets and wide bands of wetlands and cottonwood galleries long before ranching began to cut a living from this verdant cloth in in early 1900s.

It was a year of getting dirty. We cleaned, pulled weeds, and built trails with Roaring Fork Outdoor Volunteers and numerous volunteers. We catalogued a treasure chest of natural wonders with CSU's Colorado Natural Heritage Program and local ecologists. We tested the educational waters by inviting schools and students from Pre-K to college to come get to know the ranch and help envision future partnerships to serve more students from more backgrounds. We intend for Coffman Ranch to become a community asset, by the community and for the community, and we saw the community turn out in a big way for this ranch last summer.

It was also a year full of visioning and planning. It is not often you get the opportunity to assess how you want to do things before packed calendars, running to-do lists, and the unrelenting urgency of it all gets in the way. For AVLT, 2022 introduced an opportunity to be intentional in how we want to manage this ranch, its rich resources, and a community eager to access this rarity. As a demonstration ranch, this was our first opportunity to showcase how we can create a sustainable stewardship model to create a new future for this special place, while ensuring that it remains a working ranch and a home for living things. "Balance" is usually easier said than done, but this ranch offers us the chance to learn and respect that inflection point.

There is a long road ahead as we prepare to refine and implement the conceptual master plan and broaden our commitment to stewarding this place and mindfully connecting this community to it. Thank you for making this memorable year possible and for your ongoing commitment to this transformational place.



Youth In Nature at Coffman Ranch

AVLT's Coffman Ranch project was grateful to receive a 2022 Starburst Award for innovation in conservation from the Colorado Lottery. **Chapin Wright Marble Basecamp also received this distinction in 2016!**

BRINGING A CONSERVATION PLAN TO LIFE

Making the biggest impact, while we can.

In 2022, AVLT adopted its first 10-year Strategic Conservation Plan. Now we need your help to put it into action! With the support of our community and partners, we are laying the groundwork to protect and expand our existing conservation incentives, while creating new tools to catalyze more conservation and stewardship in our region and across the state. We have shared data and resources from the plan with partners and municipalities to help build a stronger network of support for conservation.

Plan Objectives by 2032:

- Double conserved acreage to protect a total of 90,000 acres
- Support 3-5 additional community-centered conservation projects and increase community engagement with conservation throughout the region
- Develop new funding, tools, and incentives to catalyze meaningful conservation, stewardship, and restoration of land

There is much work to do toward meeting the goals and objectives laid out in this plan and we look forward to continuing to make a tangible and forever impact on these valleys with your support!

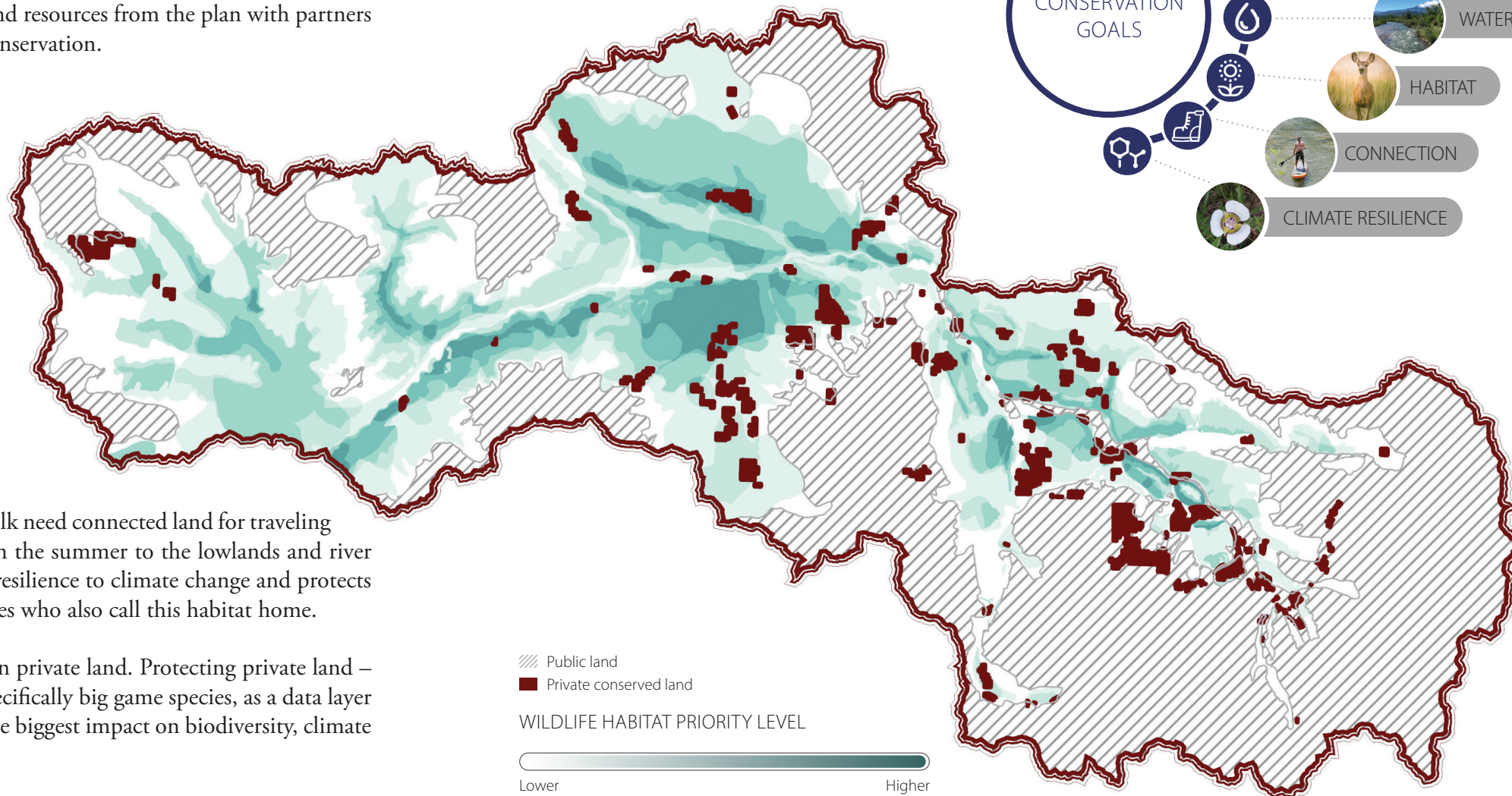
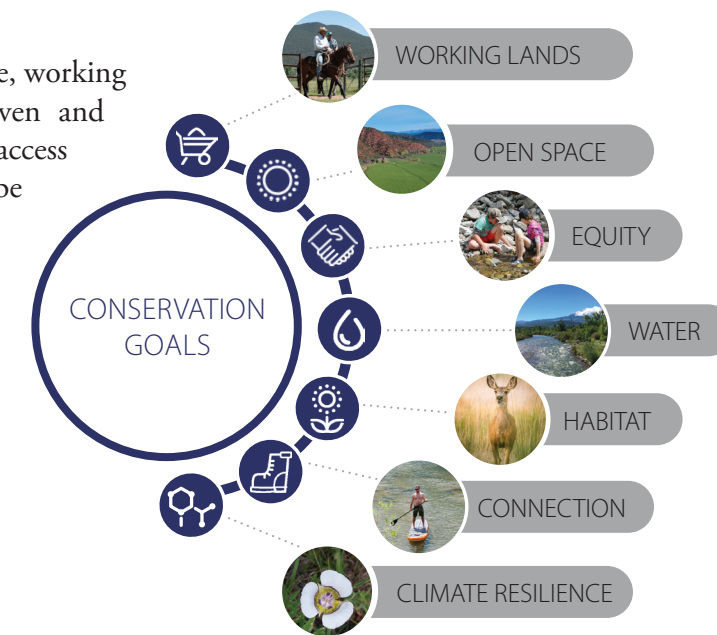
FOLLOW THE BUCKS

... and does, bulls, and cows. Large mammal species such as deer and elk need connected land for traveling and finding food and shelter as they move from the mountaintops in the summer to the lowlands and river bottoms in the winter. Protecting uninterrupted habitat increases our resilience to climate change and protects biodiversity. This also benefits the smaller critters and natural resources who also call this habitat home.

Most of the critical winter habitat for big game in our region exists on private land. Protecting private land – often agricultural land – is AVLT’s priority. Using wildlife habitat, specifically big game species, as a data layer to prioritize conservation areas, we can best direct our work to have the biggest impact on biodiversity, climate resiliency, and the health of this community – both human and wild.

INTERDEPENDENT GOALS

The landscape-scale goals of protecting open space, working lands, wildlife habitat, and water are interwoven and dependent on our goals of increasing community access and connections to land. Everyone deserves to be involved in this work and this work depends on everyone being involved.



ELEVATING OUTDOOR EDUCATION

Advancing access and equity at every altitude

We talk a lot about the elevation of student's high-alpine experience at Chapin Wright Marble Basecamp – but in 2022, the conversation about elevating outdoor education sounded different.

Year after year, you have read about the growth of our outdoor education program, which has served thousands of students, seven schools, and three nonprofits. Through the generous support of our community, thousands of students have been able to connect to their place and one another. Even with all this growth, the unfortunate reality is that many kids are still excluded from these experiences.

Every kid in these valleys should have the opportunity to feel blanketed by stars next to the warmth of a high-alpine campfire and to dip their toes in the river on the first warm days of spring. **Every kid deserves to connect to place.** The limits of our capacity do not limit the need for this work.

In assessing the gap between our growth and vision of reaching every child in our valleys, the power of partnerships becomes clear.

To elevate our outdoor education programs and ensure that every child is able to access the magic of quaking aspens and the call of hawks, AVL T is reaching new partners and supporting programs that lack access to land and this type of experience.

By providing the place, infrastructure, and program support, AVL T supports the schools and community partners that utilize Marble Basecamp and Coffman Ranch to strengthen their curriculum through these experiences. By exploring new partnerships, there is an exponential opportunity to serve more kids that have never had these opportunities, and to accomplish more than AVL T could do alone. **Thank you partners!**

Basalt Middle School at Chapin
Wright Marble Basecamp



THANK YOU, DONORS!

You make forever possible

You protect all that is special about the places we love. Every dollar you give is an investment in clean air and water, your local community, and future generations. Thank you.

List includes gifts from 1/1/2022 - 1/10/2023. We apologize for any misprints or omissions. Please contact avlt@avlt.org for any corrections.

★ *Gave for last 5 consecutive years*

★★ *Gave for last 10 consecutive years*

★★★ *Gave for last 15 consecutive years*

★★★★ *Gave for last 20+ consecutive years*

AVLT'S STEWARDSHIP CIRCLE

Help us build capacity and save more priority land now, while we have the chance. By joining the Stewardship Circle, you can help create a healthier future for our wild and human communities.

Founder	\$100,000 +
Guardian	\$25,000 +
Champion	\$10,000 +
Conservator	\$5,000 +
Steward	\$1,000 +

(levels based on annual giving)

STEWARDSHIP CIRCLE CORE

AVLT's Stewardship Circle **Core** is reserved for the dedicated supporters who have made a four-year pledge to the Stewardship Circle. This leadership gift enables us to care for all the special places forever protected over the past 55 years.

*Contact jeff@avlt.org to learn more about joining the Stewardship Circle or Stewardship Circle **Core** and investing in the future of this region.*

FOUNDERS

(\$100,000 & over)

- ★ Anonymous
Anonymous
River Valley Ranch

GUARDIANS

(\$25,000 - \$99,999)

- ★★★★ Dee Blue
Bob and Jane Clark,
Coffman Ranch
The Cross Foundation, Inc.,
Coffman Ranch
Gates Family Foundation,
Coffman Ranch
- ★★★★ John and Laurie McBride

CHAMPIONS

(\$10,000 - \$24,999)

- ★★★★ Alpine Bank
Anonymous Fund at Aspen
Community Foundation
James Aresty and Sallie Golden
Aspen Community Foundation,
Coffman Ranch
- ★★★★ BF Foundation, Coffman Ranch
- ★★★★ Jim Campbell and Sandy Jackson
Ted and Ruth Edmonds,
Coffman Ranch
The Eisner Foundation Inc.
- ★ First Western Trust
The Kristina & William Catto
Foundation
Ted Levine and Lucia Swanson,
Coffman Ranch
Tom and Janna McNicholas
The Mesdag Family Foundation
- ★★★★ James and Hensley Peterson,
Coffman Ranch
Pitkin County Healthy
Communities Fund
- ★ Jill Soffer and Our Part Foundation

CONSERVATORS

(\$5,000 - \$9,999)

- Alpenglow Foundation
- ★ Sohrab Amini, M.D. Endowment Fund
Sue Anschutz-Rodgers
Susan Brady
- ★ Sherri Draper and Will Ferry, Coffman
Ranch, *in memory of Lee Ann Eustis*
- ★ Matt and Ellen Dubé
The Dukes Family Fund
FirstBank
Forum Phi
- ★ Lacy and Ernie Fyrwald
William L. Hutton, Coffman Ranch
- ★★ Gary and Jill Knaus,
Community Education Fund
Parris and Linda Frantz Family Fund,
Coffman Ranch
- ★ The Prentice Foundation, Inc.
- ★ Dipika Rai and Doug Peckham
- ★ Raven Gallery
- ★★★ Richard and Marianne Kipper Foundation
Ruth H. Brown Foundation
Mary and Patrick Scanlan
Spring Valley Ranch - Seligman Family
Foundation
- ★ Kalli and Travis Sinclair, Coffman Ranch
Stephen M. Seay Foundation,
Chapin Wright Marble Basecamp
Storied Development
Wild Waters Foundation

STEWARDS

(\$1,000 - \$4,999)

- ★★★★ Anonymous
- ★ Anonymous
Alvin and Bessie Arlian, *in honor of Briece & Della Arlian*
- ★ Aspen Snowmass Sotheby's International Realty
- ★ Steve and Susan Baird
Mark and Sally Baldwin
- ★ Clare Bastable and Josh Hmielowski
Beardsley Family Foundation
Ted A. and Julia G. Behar, Coffman Ranch
Eric Berry, *in honor of Carla and Steve Berry*
Stuart Bohart
Brett Nelson Realty
Randy and Althy Brimm
Gavin Brooke
- ★★ John and Jackie Bucksbaum

★ Kay Bucksbaum

★ Kate Bulkley and Ross Biddescombe
CCY Architects

- ★★★★ David and Kathy Chase
City of Aspen, Parks, Open Space, and Trails
- ★★★ Martha Cochran and Steve Mills
Coldwell Banker Mason Morse
- ★ Charlie Cole
Colorado Parks and Wildlife, Coffman Ranch
- ★★★ Conservation Law, PC
Anne Cooke and Steve Pfeiffer
- ★★★★ David Corbin
- ★★★★★ Carol Craig
- ★ Mac Cunningham, Coffman Ranch
- ★★★ Lee and Donna Dale
Steve Damerow and Robin Wrinn
- ★★★ DHM Design Corporation
- ★ Jeanne and Andrew Doremus, Coffman
Ranch, *in memory of John Doremus*
F&M Architects, LLC
- ★ The Flunison Fund, Mary and Hugh Wise
- ★★★★ Bill Fales and Marj Perry
- ★ David Fleisher and Gina Berko
Margot and Dick Hampleman
- ★ Jeff and Susan Handwerk
Sam Hartnett and Blair Swift, Coffman Ranch
Mark Harvey, Lathrop Strang Memorial Fund
Joe Herbst and Linda Vitti, Coffman Ranch
Stanley Hoffberger
Susan Jackson, Coffman Ranch
Cindi Jacobson and Michael Fleagle,
Coffman Ranch
John Oakes Family Charitable Fund
Elyse and Kenny Joseph, *in honor of Sally Sakin*
- ★★★★ Mike and Laura Kaplan
- ★ Michael Kendrick and Gail Mizner
- ★ Cil Klamper
Yvonne Klausmann
- ★ Larry D. Harvey PC
Gary and Laura Lauder, Coffman Ranch
Rob and Erika Leavitt
- ★ Melony and Adam Lewis
Jim and Dianne Light
- ★★ Susan and Fred Lodge, Coffman Ranch
MANAUS
Steve Mattics
Dan McHugh
Nicky and Rebecca Mill
The Murray Foundation
- ★ Craig and Esther Navias
Obermeyer Wood Investment Counsel, LLLP
- ★ Gerry Pace, Coffman Ranch

Fonda Paterson, Hause Family R3 Fund
Mark Perlberg, *in honor of Rebecca & Nicky Mill*

- ★ Brooke and Carol Peterson
- ★★★★ Cathy Porter and Doug Folk
- ★ John and Becki Quinn
Rebecca Holland Charitable Fund
- ★ Ken and Donna Riley
- ★ Sally Sakin and Duncan Barber
Claudia Santacoloma, *in honor of Rebecca & Nicky Mill*
Steven and Clare Shane, *in honor of Rebecca & Nicky Mill*
- ★★★★ Sarah and Richard Shaw, Coffman Ranch
- ★ Katie Soden and Janet Earley
- ★★★ Bill Spence and Sue Edelstein,
Coffman Ranch
- ★ Stargazer Advised Fund
- ★★★★ Kit Strang
- ★★ Mark Tache and Christin Cooper
Jane Taylor
Thrift Shop of Aspen, Chapin Wright
Marble Basecamp
Brad and Liz Tucker
David and Lynne Uhl, Coffman Ranch
- ★ Peter and Robin Van Domelen
Douglas and Becky Walker, Coffman Ranch
Bruce and Jane Warren
- ★★★★ Andy Wiessner
Wild Woods Foundation
- ★★★★ Fred Wooden
- ★ ZG-Chicks, Ruth Owens
- ★ Peter and Joan Ziegler
Jeff and Becky Zimmermann



2022 SUPPORTERS

(1/1/2022 through 1/10/2023)

TRAILBLAZERS

(\$500-\$999)

- ★ The Arches Foundation
- ★★ Jim Austin
Syd and Mary Baxter
- ★★★★ Michael Behrendt and Ivan Cassar
- ★★ Priska and Ed Berkheimer
Thomas and Sallie Bernard
Jo and Stephen Bershenyi
- ★ Mark and Amy Bershenyi
Adriana and David Bombard
Meredith and Dan Bullock, Coffman Ranch
Daniels Family Charitable Fund
- ★ Sandra and Clifford Deveny, Coffman Ranch,
in memory of Lee Ann Eustis
- ★★★★ Mary Dominick and Sven Coomer,
in honor of Carolyn & Dick Shohet
- ★★★★ Carol Duell
- ★ Fretz Family Fund
Bert and Dyana Furmansky
- ★ Peter and Mike Gilbert
Ted Guy
- ★ Bill and Leelee Harriman
Ruth Hatfield, *in memory of Jack Hatfield*
- ★★★★ Kristen Henry
Sherry and Dr. Rick Herrington, *in memory of Lee Ann Eustis*
Molly Jankovsky and Rob Tess
Heather Jernberg, *in honor of John A. Jernberg*
Sylvia Johnson, Lathrop Strang Memorial Fund
- ★ Samantha Johnston, *in memory of Kelly K. Johnston, Sr.*
- ★ Britton and Laurie Jones
- ★ Curtis and Jill Kaufman
Kathy Lane, *in honor of Rebecca & Nicky Mill*
Ana Leaird, *in honor of Rebecca & Nicky Mill*
Amory and Judy Lovins
Robert and Suzanne Macgregor
- ★★ Lisa Markalunas
Michael and Barbara Maxson
- ★ Dr. Steven O'Brien
- ★★ Meredith and Chuck Ogilby, Coffman Ranch
Don Price, *in memory of Pat Patterson*
- ★ The Rockwood Charitable Trust, Bruce Lee,
in memory of Jack Hatfield
- ★ Maureen and Arthur Rothman, Coffman
Ranch, Lathrop Strang Memorial Fund,
in memory of Mike Strang

- ★ Bill Stirling and Barbara Bussell
- ★★★ Scott and Tamara Stuart
Bailey Teague and Griffin Foster
- ★ Lois Harlamert Teegarden
Anne Ware

PROTECTORS

(\$250-\$499)

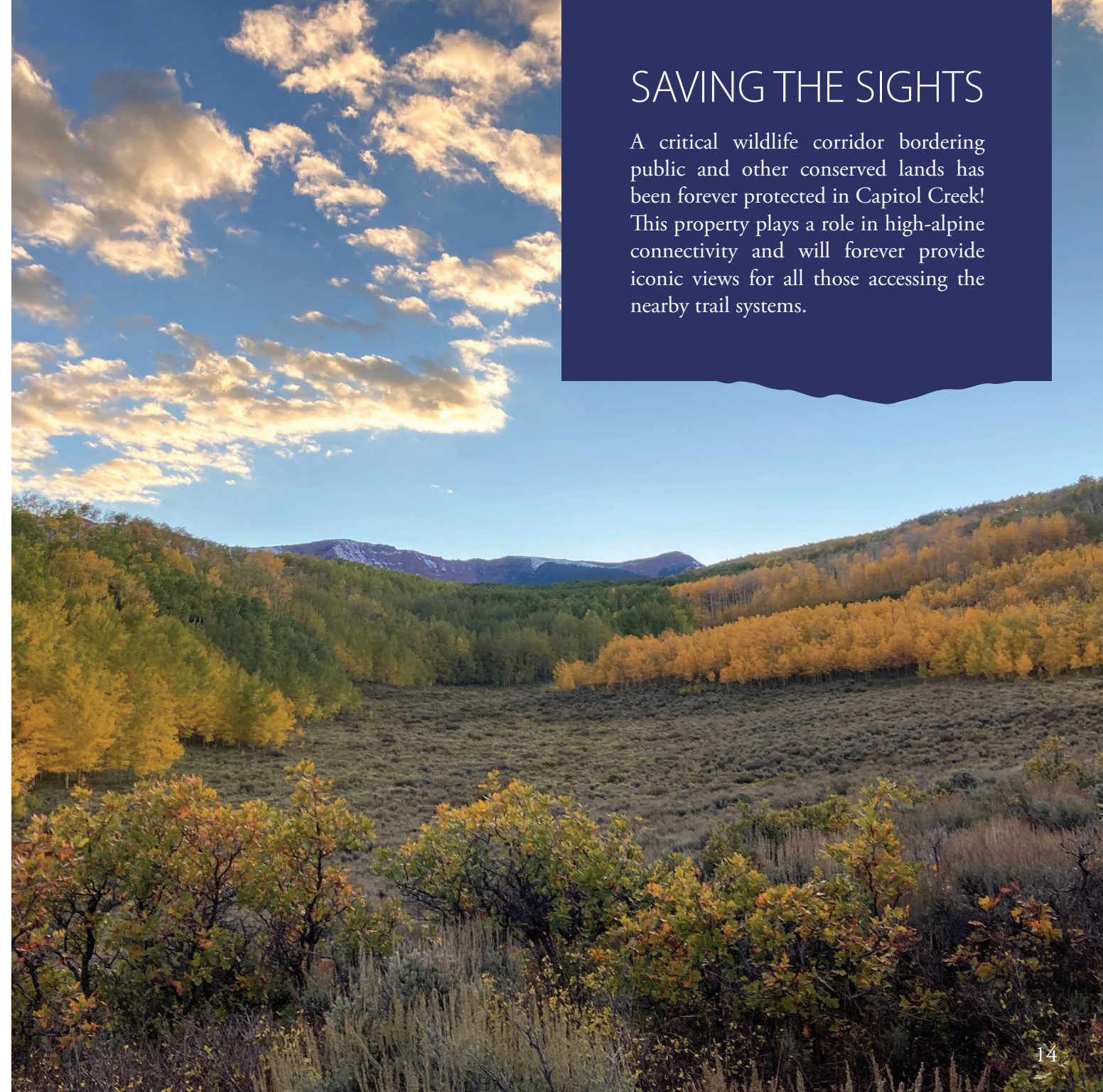
- Edmund D. Andrews and Sharon E. Caufield,
Coffman Ranch
- ★★★★★ Becky Ayres
- ★ Charles and Susan Bantiss
Amy and Justin Barrow
Carol Bayens, *in memory of Pat Patterson*
Elizabeth Bayliss and Simon Hambidge,
Coffman Ranch
- ★ David Becher
Skip Behrhorst and Donna Fisher
- ★ Gary and Rose Bensen, *in honor of Nate & Julia Rowland*
- ★★ Alan Bershenyi
Clarence and Anne Blackwell
Debby and Michael Brady, *in memory of Lathrop & Mike Strang*
- ★ Jill and Michael Briggs
Budget Blinds of the High Country
Tom and Jody Cardamone, *in honor of Dave Erickson*
Rich and Jennifer Carr, *in memory of Richard Carr Sr.*
Lindsay and Doug Claxton, Coffman Ranch
- ★ Sally Cole, *in memory of Lee Ann Eustis*
- ★ Debbie and Gabe Collins
Bob and Patty Cook
- ★★★★ John and Susan Cottle, Coffman Ranch
- ★ Susan Cuseo, Coffman Ranch, Lathrop Strang
Memorial Fund
Sue Daley and Jimmy Myers
Laurie and Bob Danks
Davis Horn, Inc.
Brandy Drake
Sandy and Willa Falck
Joe Forsman, *in memory of Beverly Forsman*
J Anthony and Molly Fort, *in memory of Pat Patterson*
- ★★★★ Marcia and Tony Fusaro
- ★★ Jim and Khara Gaw

- Jessica and John Gordon, *in memory of Lee Ann Eustis*
Grossman Family Advised Fund
Peter and Barbara Guy, *in memory of Pat Patterson*
Matt and Nina Gworek, Coffman Ranch,
in honor of Henry and Junior
- ★ Adele Hause, Hause Family R3 Fund,
in memory of Kea & Ian Hause

- ★★★★★ Casady Henry
- ★ Bob and Sue Hess
Brian and Heather Hipona
Judy and Nick Huston
- ★ Wayne and Jo Ives
- ★★★★★ Greg and Sean Jeung
Gerald and Maury Kaplan
Valery and Kearns Kelly
- ★ Michael and Julie Kennedy
Kimbrell Family Fund
Patricia Kirsch, *in honor of Rebecca & Nicky Mill*
- ★ Amy and Nick Krick
Nicole Leonard and Jacob Trumbull,
Coffman Ranch, *in honor of the AVL T Staff*
- ★★★ Howie Mallory Family
Joan Matranga, Hause Family R3 Fund
Stewart and Stephanie McConaughy
- ★ Tim and Donna McFlynn, Coffman Ranch
Tracy McLaughlin
Elsa Mitchell
Dick and Ann Moebius
Thomas and Shelby Morgan
Tom and Debra Morton, *in memory of Eliza Gallegos*
- ★ Marjory Musgrave and Frank Peters
Richard Neiley, Coffman Ranch
- ★ Leslie and Bill Neveu, Coffman Ranch
Frank and Sally Norwood, *in memory of Lee Ann Eustis*
Jaime and Jason Olden, Coffman Ranch
Rosemary Patterson
Robin Pauli
Susan Plummer
Cintra Pollack
- ★ John and Lesia Rehl
Gino and Donna Rossetti
Barbara Rumsey, *in memory of Lee Ann Eustis*
John and Erin Spiess
- ★★ Pat Spitzmiller, Coffman Ranch
- ★ Roark and Linda St Romain, Hause Family
R3 Fund
John Starr
- ★★ Suzanne and Jeff Stephens, *in memory of Pat Patterson, in memory of Lee Ann Eustis*
- ★★★★★ Bridget Strang, Lathrop Strang Memorial Fund

SAVING THE SIGHTS

A critical wildlife corridor bordering public and other conserved lands has been forever protected in Capitol Creek! This property plays a role in high-alpine connectivity and will forever provide iconic views for all those accessing the nearby trail systems.



2022 SUPPORTERS

(1/1/2022 through 1/10/2023)

PROTECTORS CONT.

Shelly Thigpen
Robert Van Wetter
John and Ruth Ward
★ Jay and Patti Webster, Coffman Ranch
Matthew Webster
Julia Winger
Alix and Fabrizio Zangrilli, Coffman Ranch
David Zumwinkle
Robert Zupancic and Deborah Stein,
Coffman Ranch

PATHFINDERS

(\$100-\$249)
★ Jo Anne Ahrens
Diana Alcantara, Coffman Ranch
★ Jackie Amthor, *in memory of Lee Ann Eustis*
★ Matt and Sue Annabel
Anonymous
★ Jim Armstrong and Sharon Sturges
Edward Baney, Coffman Ranch
Nathaniel Bates
Katie Bauer, Coffman Ranch
Brian and Amiee Beazley
Peter and Donna Belch, Coffman Ranch
Tracy and Robert Bennett
★ Jeff and Janette Bier
Verena Bishop, *in memory of Dick Hunt, in memory of Gerhard & Elsbeth Mayripsch*
Monika Blanchard
Ben Bohmfalk and Megan Perkins
★★★★ John and Myra Bone, *in memory of Dr. Donald Stewart*
Scott and Betsy Bowie
Barbara Boyles
Susan Brady, Coffman Ranch
Christopher Breen, Coffman Ranch
Patty and Eric Brendlinger
Jennifer and Adrian Brown, Coffman Ranch
Shelley Burke, *in memory of Al Nemoff*
Oni Butterfly, *in memory of Pat Patterson*
★★★★★ Jim and Michele Cardamone
★★★★ Roger and Helen Carlsen
Dennis and Penney Carruth
Mark and Peg Chain, Coffman Ranch
Jack and Madeline Charles, Coffman Ranch
Jeanie Child

★★★★ Mark and Jeanie Clark
Cynthia Colebrook
Sonny Conley, Spirit of Unlimited Loving
Ministries
Jay Coursey, Coffman Ranch
★ Paul D'Amato and Beth Cashdan
★★★★ Susan Darrow
Charles and Suzanne Davis, *in memory of Lee Ann Eustis*
Peter and Cay Davis
Philip and Christine Davis
★ The Davlyn Family
Shannon Day, *in honor of Rebecca & Nicky Mill*
★ Jerome and Donna Dayton
Susan and Bob Donlan
★ Chuck and Doris Downey
Bonnie Earl, Coffman Ranch
Ronda Eckhardt, *in memory of Pat Patterson*
Don and Susan Edmonds
★ Stephen and Jennifer Ellsperman
Scott Ely and Chrissy Leonard
Jackson and Olivia Emmer, Coffman Ranch
Philip and Lisa Ensign
★ Andrew and Ashley Ernemann
Norris and Susan Ewalt
Mary Lou and Joe Farrell
Kathy and Greg Feinsinger
Boots Ferguson and Carolyn Miller
Matt Ferguson
Deborah and Scott Fifer
Mavis Fitzgerald, Coffman Ranch
Diane Foster
Ginna and Tim Francis
Karen Friedberg
Mark Fuller and Penny Atzet, *in honor of Casady Henry*
Chris Gang, *in honor of Graham Ryan Ward*
Chris and Marni George, Coffman Ranch
Kade Gianinetti, Coffman Ranch
Jillian Gibbs, Coffman Ranch
Mark and Linda Giesecke, Coffman Ranch
★ Randy Gold and Dawn Shepard
Anne Goldberg
Hawk Greenway
Anne Grice, Coffman Ranch, *in honor of Bill & Marilyn Seguin, in honor of Sis Johnson*
Evan and Flossie Gull
Rosa Guzman

Ashley Hagin and Trevor Bolliger
★ David Hamilton
Laura Hanssen
Susan and Michael Hartnett
★★★★ Michael Hassig and Olivia Emery
Richard Hatfield, Marie Hatfield, and Sheryl Hatfield
Doreen Herriott
Brian and Emily Hightower
Andrea Holland-Sears and Jim Sears
Glenn Horn and Alice Davis
John Hornblower and Kristine Petrandis,
Coffman Ranch
Carolyn and Bill Howard
Kate Hudson
Christine Interlante, Coffman Ranch
Molly Irwin and Josh Fogg
★★★★★ Jim Jensen and Jeannie Russell
★★★★★ Ann Johnson, Lathrop Strang Memorial Fund,
in memory of Lee Ann Eustis
★ Sandy and Peter Johnson, Chapin Wright
Marble Basecamp
Deborah Jones and John Katzenberger
Nancy Kahn
Leann and Richard Katchuk
Susan Katz, *in honor of Zachary Frisch*
★ Gideon Kaufman
Emily Kay
★ Mary Jo Kimbrough and James Harrison
Susan Kimelman, *in honor of Rebecca & Nicky Mill*
★ Laura Kirk and David Carpenter
Barbara Klein and Michael Garcia,
Coffman Ranch
Andi Korber and Robert Sommerfeld,
Coffman Ranch
Chris and Monica Latkiewicz
Michelle and Brian Lazar
★★★★ Terry Lee, *in memory of Lee Ann Eustis*
Richard and Jean Leety, Coffman Ranch,
in memory of Janet Decker
Lloyd E. and Patti Barry Levy, Coffman
Ranch, *in memory of Lee Ann Eustis*
Bob and Dori Libson
★★ Bill and Carol Lightstone
Brian and Kathy Lorch
Angela Loughry
Lisa and Jonathan Lowsky
Max Macdonell
Kristen Maley
★★★★ Julia Marshall
Lisa Mattson, Coffman Ranch
Ken and Patti Miely
Scott and Cathy Miller, Coffman Ranch

Rebecca Moller
John and Caroline Moore
★ Rick Moore
★★★★ Tom and Carolyn Moore
Tim and Mackenzie Morgan, Coffman Ranch
Mary Jo Murphy, Coffman Ranch
Sydney Nemeroff, *in honor of Rebecca & Nicky Mill*
Bland Nesbit
Nona Niland, Coffman Ranch
James Nunley, Coffman Ranch
★★★★★ Bob Olenick
Tom and Mia Ortman, Coffman Ranch
Celia and Peter Orvis
★ Robert and Marci Pattillo
★★ Norman and Melinda Payson
★★★★★ Fred and Sandra Peirce
Karen Peirson
Daniel Perlman and Bryna Ram,
Coffman Ranch
Karen Petersen
Laura and Ron Pickman
★★ Bob and Sue Pietrzak
Nancy Pitman and Barb Pitman
★ Geoffrey and Hope Platt, Lathrop Strang
Memorial Fund
Greg and Maureen Poschman, Coffman Ranch
★ Bob Purvis
John Putnam, Coffman Ranch
★ Erin and Colin Quinn
William and Anne Quinn
Lee Reed, Coffman Ranch
Alex Reginelli and Shawna O'Shea Reginelli,
Coffman Ranch
Diane and Murray Reynolds, Coffman Ranch
★ Clark and Katy Rieves
Allison Rittner
Ben and Elizabeth Roos
Will Roush
★ Edward Sands
★ Mike Sawyer
Gavin Seedorf, Coffman Ranch
Mark and Jocelyn Shelton, *in memory of Tom Garretson*
Sloan and Beth Shoemaker, Coffman Ranch
★★★★★ Carolyn and Dick Shohet, Coffman Ranch
Sandy Smith, Coffman Ranch
Steve Smith and Heather McGregor
Ron and Lisa Speaker
★★★★ Steve and Sandy Stay
★★★★ John Stickney and Lee Beck
Henry and Alyssa Strazza, Coffman Ranch
Victoria Stulgis, *in honor of Rebecca & Nicky Mill*
Judy Sullivan

★★★ Mark and Melissa Sumera, *in memory of Pat Patterson*
Sunsense Solar
Shelley Supplee, Coffman Ranch
★★★★ Tripp and Gabriella Sutro
Kathy Sydoryk
Larry Tallmadge, Coffman Ranch
★★★★ Jennifer and George Tempest, Coffman
Ranch, Lathrop Strang Memorial Fund,
Hause Family R3 Fund, *in honor of Rex & Jo Coffman, in memory of Lathrop Strang, in memory of Kea & Ian Hause*
★ Tony and Sheila Thelen, Hause Family R3 Fund
★★ Alexander and Dorothea Thomson
Nancy Thorpe, Coffman Ranch
★★ Amy and Doug Throm
Jennifer Tilley
Robin and John Tolan, *in memory of Lee Ann Eustis*
Nancy and Chuck Torinus
James Trapp
Parker and Albert Trostel, *in memory of Lee Ann & George Eustis*
David Tubero
★★★★ Robert Tures and Christine Chisholm,
in honor of Bert Chisholm
Annie and Carl Uyehara, Coffman Ranch
Eden Vardy and River Morgan, *in honor of Jeff Davlyn*
★★ Gregg Velasquez and Theresa Zelenka
★ Bob and Ruth Wade
Heidi and Paul Wade, *in memory of Lee Ann Eustis*
Craig and Becky Ward
★★ Sylvia Wendrow
Ken and Debbie Whaley
Marshall Whiting and Richard Arnold,
in honor of Clark Woodward
Lauren Whittaker and Jade Wimberley,
Coffman Ranch
★ Pierre & Beth Wille, Tyrolean Lodge
Jean Woodward, Community Education
Fund, *in honor of Clark Woodward*

EXPLORERS

(\$50-\$99)
Alex Adami
Steve and Jean Alberico
Anonymous, Community Education Fund,
in memory of Joseph Benson
★ Ellen and Bill Birk
Judith Blanchard
Carly Bolliger and Molly DeMarr

Lawrence Bond
Mike Bucchin and Charis Caldwell, *in honor of Erin Bucchin*
Janet Buck
Eliza and Andrew Burlingame
Sarah P. Carleton, *in honor of Carol Duell*
Steve and Georgia Carter
Rory and Lucy Cerise, Lathrop Strang
Memorial Fund, *in memory of Lee Ann Eustis*
Patricia Chew and Robert Whalen, Hause
Family R3 Fund, *in memory of Ian and Kea Hause*
★ Anne Austin Clapper
Bruce and Betty Collins
Mary Coogan, *in memory of Lee Ann Eustis*
Brandon Cowhey
Russ and Linda Criswell
★★★★ Paula Derevensky, Coffman Ranch
Tom and Lynn Dunlop
Ralph Dupps
Christine Elliott
Joe Enzer
★ Molly Fales
★ Marguerite Flett
Amber Franze
Christy and Nathan Garfield, *in honor of Kalli Sinclair*
★★★★ Sara Garton
★★ Jon Gibans
Doug and Peggy Graybeal
Thomas Griffiths
Barb Hanrahan
Carolyn and Dan Hardin, *in memory of Lee Ann Eustis*
Ted and Robin Haugland
★ Jamin and Caitlin Heady-Smith
★ George Hendrix, Coffman Ranch
Virginia Hmielowski, *in honor of Clare Bastable*
Michael Hutton and PJ Wallace
The John and Mary Lou Flynn Family
Joseph John
★ Jackie Kasabach
Megan Lamb
Vennie Lilly and Paula Casper, Coffman
Ranch, *in memory of Stella Florine Lilly*
★ Laurie Loeb

★ *Gave for last 5 consecutive years*
★★ *Gave for last 10 consecutive years*
★★★ *Gave for last 15 consecutive years*
★★★★ *Gave for last 20+ consecutive years*

LOST MARBLES RANCH FOUND ITS FUTURE

We are incredibly grateful to the McBride family for once again demonstrating their commitment to the wild and human lives of this area by conserving the rest of their family ranch. Lost Marbles Ranch is an integral piece of the tapestry of protected properties in the Capitol Creek Valley and will forever be a haven for wildlife and diverse ecosystems.

"We feel it's the right thing to do for the land, the wildlife, and the valley."

- John McBride



2022 SUPPORTERS

(1/1/2022 through 1/10/2023)

EXPLORERS CONT.

- Jennifer and Greg Long
- ★ Ken and Joani Lubrant
- Ashley Martin, *in honor of Clare Bastable*
- Anthony and Sheryl Merkel
- Marnie Mosiman and Ted White
- ★ Mountain, Valley and Plains, Inc.
- ★★ Rick and Virginia Newton
- Tom Oken and Janie Lowe
- Ethan Oster
- ★ Niall Parker
- Barbara Pettinos
- Donna Phelps and Bruce Pearson
- ★ Ken and Bonnie Pletcher
- Jude Prochaska, *in honor of Tim McFlynn*
- Carol and George Pucak
- Kelly Radunske
- Ron Reed
- Dana Reynolds
- Paula Rhodes
- Holly and Dan Richardson
- Jennifer Sauer
- Rebecca Schild and Chris Barlow
- ★★★ Barbara Schomaker, Coffman Ranch
- Elizabeth Selzer, Coffman Ranch, *in honor of Brian Hightower and my RFOV trail crew*
- Paige Slaughter
- Kim Stacey
- Richard Stevens
- Anais Tomesko
- ★ Tom Turnbull
- Elizabeth Wheeler, *in memory of Earl and Robert Wheeler*
- Jan and Kirk Williams
- Zach Wilson

SEEDLINGS

- (\$49 & under)
- Sara Adams
- Paul Andersen and Lu Krueger-Andersen
- Rachelle Anslyn
- Ryan and Bridgette Anslyn
- Eric Bauer
- Jeanne Beaudry and Jack Butterfield
- Tera Boaeuf
- Lori Brandon

- Nic Caiano
- Jodi Callison
- Nan Campbell
- Margaret Cherny
- Carolyn Cipperly
- Sam Crary
- Lib De Stefano
- Molly Dillon
- Nathan and Barbara Dills
- Lyssa Duncan
- John Elkins and Susan Kaye
- Stephanie Erwin
- ★ Katie Fales and Howie Kuhn
- Donald Flaks
- Alyssa Franklin
- Marty Franze
- Larry Gottlieb and Kay Knickerbocker
- Susan Graves
- Lynn Holland
- Andrea Inhoffer
- Stephanie Janiga
- Micki Jeronimus
- Marie Keilbarth
- Scott Kenner
- Lynn Kirchner
- Kerry Kleisner
- Larisa LaLonde
- ★ Ann Larson
- Philip Lidov
- Rick and Lindsay Lofaro, *in memory of Lee Ann Eustis*
- Parker Maddux
- Jack McKay and Leslie Gallagher
- Robert Mitchell
- Karen Moculesski
- Bailey Mosiman
- Anne Norrdin
- Grace Oliphant
- Bryna Patterson
- Erik and Carla Peltonen
- Nancy Peterson
- Liz and Bill Phillips
- Patricia and Mike Pilburn
- Terri and Dave Ritchie
- Jessica Riveira
- Heather Rydell
- Jackie Sculco

- Stella Shoemaker
- Liz Silver
- ★ Jon Sirkis
- Soldner Family Partnership
- James Spencer
- Tatyana Stevens, Coffman Ranch
- Carolyn Stoner
- Jeremy Stott
- Stacey Stuart
- ★ Edward Sullivan
- Emily Supino
- Jillian Sutherland
- Lori Wells
- Debra Winston
- Elise Wolf
- Keiko Woodyard
- Ritchie Zah

SUSTAINING MEMBERS

- Syd and Mary Baxter
- Carly Bolliger and Molly DeMarr
- Mike Bucchin and Charis Caldwell
- ★★★ Lee and Donna Dale
- ★ The Davlyn Family
- Brandy Drake
- ★ Adele Hause
- Brian and Emily Hightower
- ★ Samantha Johnston
- ★★ Lisa Markalunas
- ★ Tim and Donna McFlynn
- Rebecca Moller
- Robin Pauli
- Dana Reynolds
- Paige Slaughter
- ★★ Amy and Doug Throm

Help keep conservation moving forward all year long by becoming a Sustaining Member with your monthly gift at avlt.org/monthly!

- ★ Gave for last 5 consecutive years
- ★★ Gave for last 10 consecutive years
- ★★★ Gave for last 15 consecutive years
- ★★★★ Gave for last 20+ consecutive years

THANK YOU, 2022 SPONSORS!

NORTH STAR



SKY MOUNTAIN



CROWN MOUNTAIN



FLYING DOG

Conservation Law P.C.
F&M Architects, LLC
Larry D. Harvey, P.C.
Obermeyer Wood Investment Counsel LLLP

BUSINESS OF THE YEAR



As Alpine Bank celebrates its 50th Anniversary in 2023, AVLTL would like to reflect on a long history of support from this local institution that has had a remarkable impact on the entire community. For decades, Alpine Bank has demonstrated their dedication to the places and people that make the Roaring Fork and Colorado River valleys unique. Their support has played a major role in helping AVLTL protect and care for these valleys. Thank you and Happy Birthday, Alpine Bank!

2022 IN-KIND DONORS

- Judy Anderson Community Consultants
- Aspen Skiing Company
- Batch Provisions
- Eagle Crest Nursery
- Lib De Stefano
- ★★★★ DHM Design Corporation
- Eagle Crest Nursery
- Gorsuch Ski Cafe
- ★★★★ Gran Farnum Printing
- George Hendrix
- JAK Innovations, LLC
- Marble Distilling Company, LLC
- Ann L Ramsey
- Roaring Fork Outdoor Volunteers
- Tierney Lawrence Stiles
- T-Lazy-7 Ranch
- Brad and Liz Tucker
- Waterlaw: Patrick Miller Noto
- Dan Young
- Theresa Zelenka

There are countless ways to support your local land trust. Learn more about how to sponsor this work or make an in-kind gift by contacting avlt@avlt.org or (970) 963-8440.



VOLUNTEER OF THE YEAR

SYLVIA WENDROW

A long-time supporter and friend to AVLTL, Sylvia had impeccable attendance at every single one of AVLTL's volunteer opportunities in 2022 – and for many years previously! From helping events run smoothly, to pulling weeds, to cleaning the Coffman Ranch historic barn, Sylvia is up for any task in order to support this mission. We can always count on Sylvia and enjoy her company in the process. Thank you, Sylvia!

ROOKIE OF THE YEAR

WILL TUCKER

Young in years but deep in skills, Will's entrepreneurial spirit and eagerness to help was quickly welcomed by the AVLTL team. A 'Will' of all trades, he helped with everything from landscaping, building bridges, and AV support for events at Coffman Ranch. The world needs more kids like Will and we hope he remembers us when he goes on to change the world!



CREATE A FOREVER LEGACY

Land conservation is one of the few investments that can last forever. By planning a gift to Aspen Valley Land Trust, you will help ensure the protected open lands, wildlife habitat, clean water, and local agriculture that is here today will be here for future generations. By planning a legacy gift to conservation, you can help protect these special places and the benefits they provide for both human and wild lives. Some of your options include:

- Leaving a simple bequest through your will.
- Designating a gift through your life insurance plan or retirement account.
- Donating a gift of real estate that can be conserved or sold to benefit conservation.

To learn more about how you can invest in the future of our valleys, contact Jeff Davlyn at jeff@avlt.org.



"Rancher Class" with Rex Coffman courtesy of Carbondale Community School

2022 FINANCIALS

CONSOLIDATED STATEMENT OF FINANCIAL POSITION*

For the year ending December 31, 2022
(based on audited financial statements)

	2021	2022
CURRENT ASSETS	207,328	665,066
INVESTMENTS	4,622,934	4,141,931
RESTRICTED INVESTMENTS	1,010,099	1,448,079
INVESTMENTS HELD ON BEHALF OF OTHERS ¹	1,316,849	1,142,886
PROPERTY & EQUIPMENT, net of depreciation	4,761,824	4,987,907
TOTAL ASSETS	\$11,919,034	\$12,385,869
CURRENT LIABILITIES		
Accounts Payable & Accrued Expenses	32,923	5,022
Amounts Held on Behalf of Others ¹	1,316,849	1,142,886
Short-Term Loan ²	1,202,923	0
TOTAL LIABILITIES	\$ 2,552,695	\$ 1,147,908
UNRESTRICTED NET ASSETS		
Operating Investments	1,845,435	3,548,551
Board Designated Stewardship Investments	2,273,273	2,001,973
Land (Coffman Ranch, Marble Basecamp) ³	4,059,991	4,219,332
Net Property & Equipment	356,654	348,213
NET ASSETS WITH DONOR RESTRICTIONS		
Temporarily Restricted Cash & Investments	485,807	699,530
Land Held Permanently for Conservation	345,179	420,362
TOTAL NET ASSETS	\$ 9,366,339	\$ 11,237,961
TOTAL LIABILITIES AND NET ASSETS	\$ 11,919,034	\$ 12,385,869

* Includes AVLT and subsidiary LLCs (AVLT Coffman Ranch LLC, Chapin Wright Marble Basecamp LLC)

¹ Investments held on behalf of others: Sutey Ranch Management Fund is an endowment held on behalf of BLM exclusively for management of BLM's Sutey Ranch.

² Short-Term Loan for purchase of Coffman Ranch was paid off in full April, 2022.

³ Coffman Ranch was purchased for \$6.5M in August, 2021; a conservation easement granted to Pitkin County reduced its booked value to \$3.8M.

Land and conservation holdings (as of 5/15/2023): 45,919 acres

- Conservation Easements held/co-held by AVLT: 265 (45,667 acres)
- Parks and Open Spaces owned fee simple by AVLT: 11 (252 acres)

2022 REVENUE: \$1,446,916



Program Revenue	26%	\$381,594
Contributions & Special Events (including donor restricted contributions)	74%	\$1,521,074
Investments	0%	-\$455,752

2021 EXPENSES: \$1,361,254



Administration	15%	\$207,568
Fundraising	22%	\$305,587
Conservation & Education Programs	61%	\$848,099

Printed on recycled paper.





320 Main Street, Suite 204 Carbondale, CO 81623
(970) 963-8440 | avlt.org | avlt@avlt.org

||

To become naturalized is to live as if your children's future matters, to take care of the land as if our lives and the lives of all our relatives depend on it. Because they do.

- Robin Wall Kimmerer



Aspen Valley Land Trust is a 501(c)3 nonprofit organization whose mission is to protect the open land and special places of the Roaring Fork and middle Colorado River valleys for wildlife, agriculture, and community forever.

Cover photo: BioBlitz at Coffman Ranch
with Colorado Natural Heritage Program